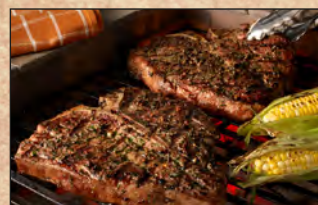
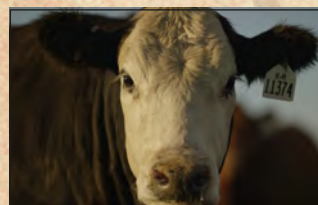


Nonprofit Organization
U.S. POSTAGE
PAID
Topeka, Kansas
Permit No. 358

Kansas Beef Council
6031 S.W. 37th Street
Topeka, Kansas 66614
An affiliate of the Kansas Livestock Association

Register
TODAY!



Advanced Beef

Cattle Care & Health Training

Featuring:



Training & Certification

See inside for dates and locations!

Provided by:

KANSAS
BEEF
®
.ORG

through your investment in the beef checkoff

Locations, Dates & Times —

Anderson County Sales Company

Monday, February 4

6:00 - 9:00 p.m.

430 N. Maple, Garnett, Kansas

Farmers & Ranchers Livestock Comm. Co.

Wednesday, February 27

6:00 - 9:00 p.m.

1500 West Hwy. 40, Salina, Kansas

Pratt County Fairgrounds

Tuesday, February 12

6:00 - 9:00 p.m.

81 Lake Road, Pratt, Kansas

Winfield Livestock Auction

Thursday, March 14

6:00 - 9:00 p.m.

7168 US Hwy. 160, Winfield, Kansas

Atchison County Auction Company

Monday, March 25

6:00 - 9:00 p.m.

2103 Main Street, Atchison, Kansas

No registration fee and includes a complimentary meal!

The Program —

- Advanced Beef Quality Assurance (BQA) Training for cow-calf, feedyard and stocker
- Animal Husbandry Best Management Practices
- Downed Animal Care and Humane Euthanasia Training
- Cattle Lameness and Treatments
- Stockmanship Principles and Low-Stress Cattle-Handling Techniques
- Improving Facilities for Beef Cattle
- How Vaccines and Antibiotics Work

The Speakers —

- Dan Thomson, DVM, Jones Professor of Production Medicine, KSU
- A.J. Tarpoff, DVM, Assistant Professor/Extension Beef Veterinarian, KSU

KANSAS
BEEF
ORG



Registration —

Four easy ways to register. Registration received less than one week prior to the meeting may not include a meal.



Send complete registration information to
John Sachse at john@kansasbeef.org



Call the Kansas Beef Council at (785) 273-5225



Mail the completed registration form to
Kansas Beef Council
6031 S.W. 37th Street
Topeka, Kansas 66614



www.kansasbeef.org/BQA

~ PLEASE PRINT ~

Name: _____

Business Name: _____

Address: _____

City, State & Zip: _____

Preferred Phone #: _____ ☐ cell ☐ home ☐ office

County: _____ Email: _____

Please check which location you will attend:

☐ Garnett ☐ Pratt ☐ Salina ☐ Winfield ☐ Atchison

Are you BQA-certified?

☐ Yes (If yes, what was the date of certification?) _____

☐ No

Registration questions? Need special assistance or have special dietary needs? Please contact John Sachse at (785) 273-5225 or john@kansasbeef.org. Please make contact at least one week prior to the event and every effort will be made to assist you. By registering I give my permission to distribute my name and contact information to conference attendees. If I prefer not to be included in these distribution lists, I will include a written request for my contact information to be omitted.