



Ranch Management Field Day

Mushrush Ranches | Strong City, KS

Thursday, August 10, 2023 | 3:30 pm



Sponsored by:



MUSHRUSH RANCHES

Located in the heart of the Flint Hills, Mushrush Ranches has been family-owned and -operated since the early 1950s when it was founded by the late Bob and Oma Lou Mushrush. The operation accumulated 40 years of experience in the commercial cow-calf business under their management. When Bob and Oma Lou's son, Joe, and his wife, Connie, joined the ranch full-time in 1980, the first registered Red Angus cows were added.

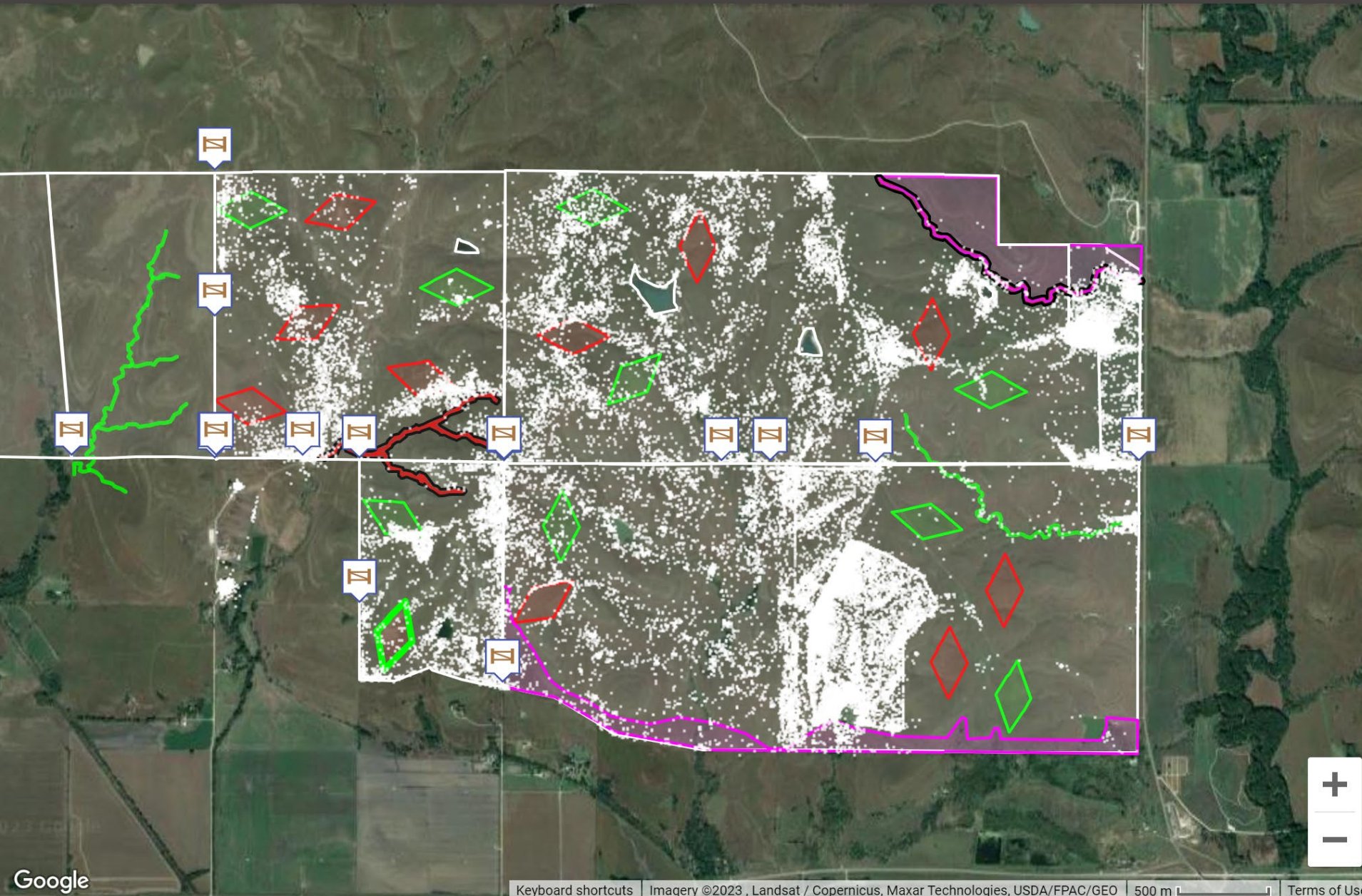
Today, the operation consists of a registered Red Angus cowherd split between both spring- and fall-calving herds and a commercial heifer development enterprise. It also involves the third generation of Mushrushes, who are raising the fourth generation on the ranch. Joe and Connie's children who have come back to the ranch full-time include Daniel, Chris and Cole. Daniel and his wife, Christine, have four children: Sadie, Bella, Kate and Eli. Chris is married to Katie Jo.

The multi-generational ranch relies on the latest technology and sound science to provide a rock-solid foundation for their operation. This includes the areas of cowherd management and grassland maintenance.

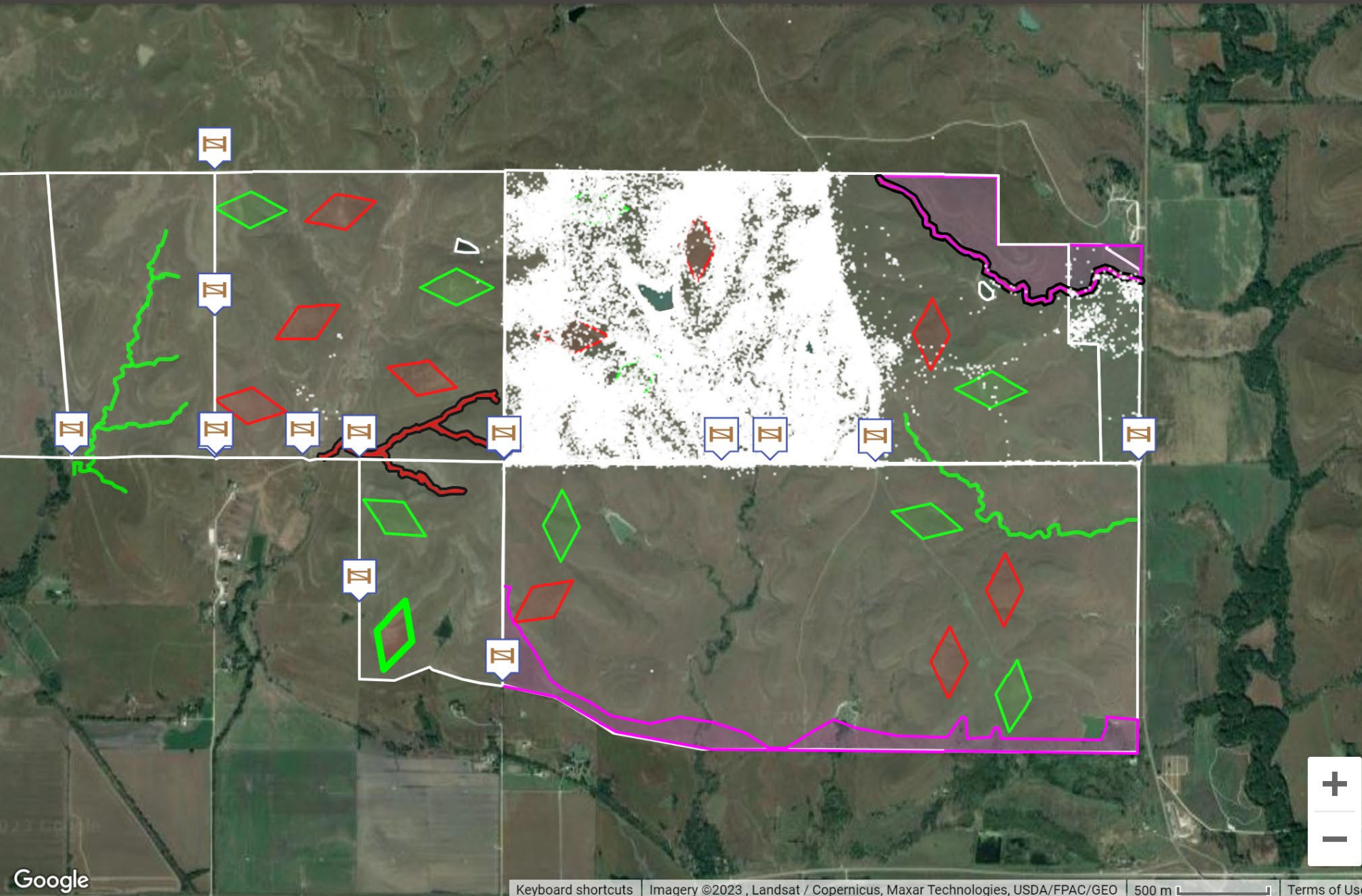
During the active growing season in the Flint Hills, a rotational grazing program is used to intensify the grazing period and provide rest for regrowth. As the protein content of the forage drops in the fall, they provide a supplement to allow the cattle to utilize the grass as much as possible. The Mushrushes also use cool season perennial and annual forages for grazing during the winter after the cattle have utilized the dormant warm season grasses.

Tall fescue and smooth brome grass represent the bulk of the perennial cool season forage. The annual forage varies but generally contains cereals like wheat or rye, with a mix of brassicas such as turnips, radishes or kale. This forage is stockpiled until around the first of the year when the weather is the harshest and the cattle have largely utilized the dormant warm season grasses.

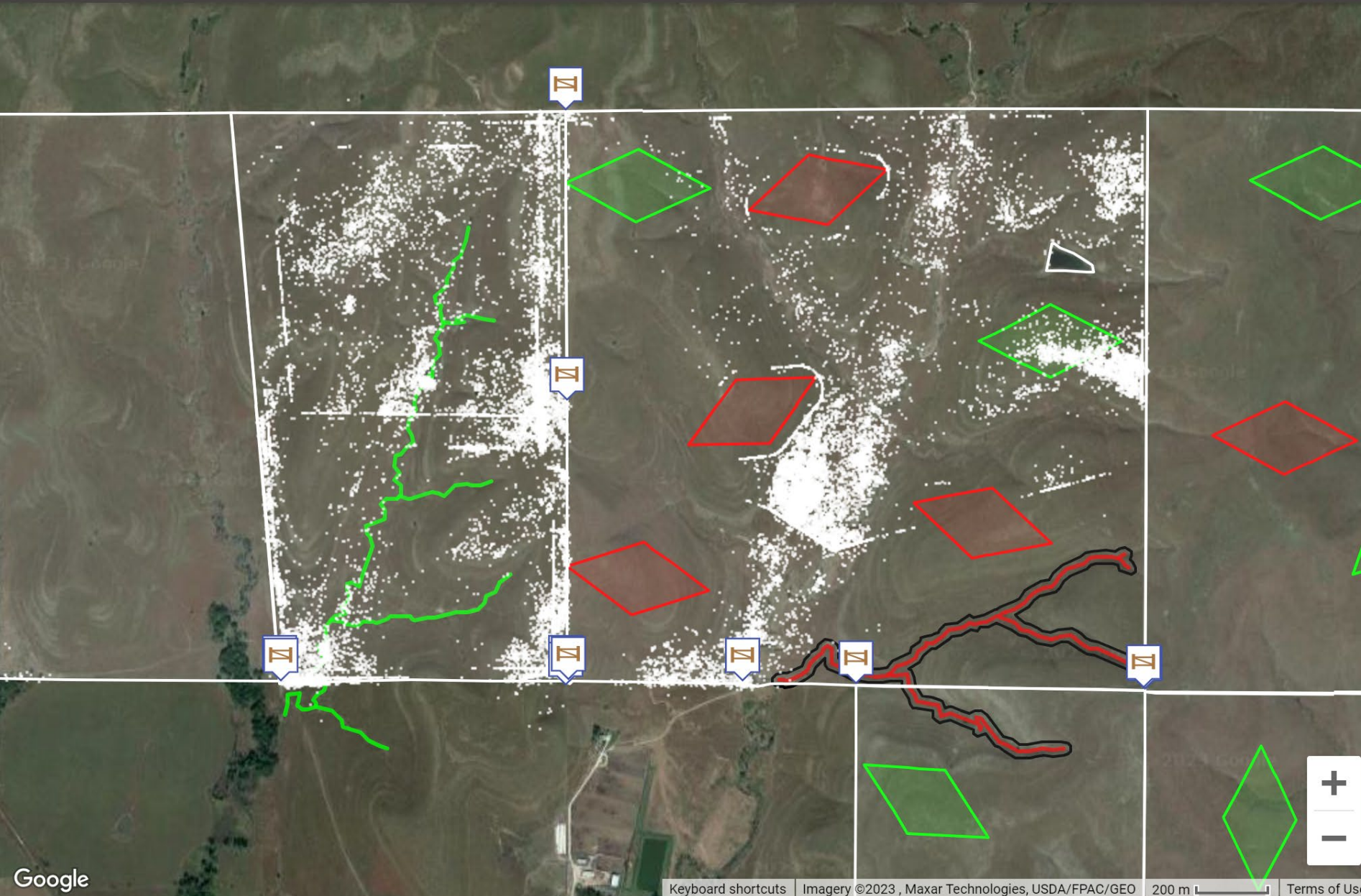
RH & CH Training and Start Units

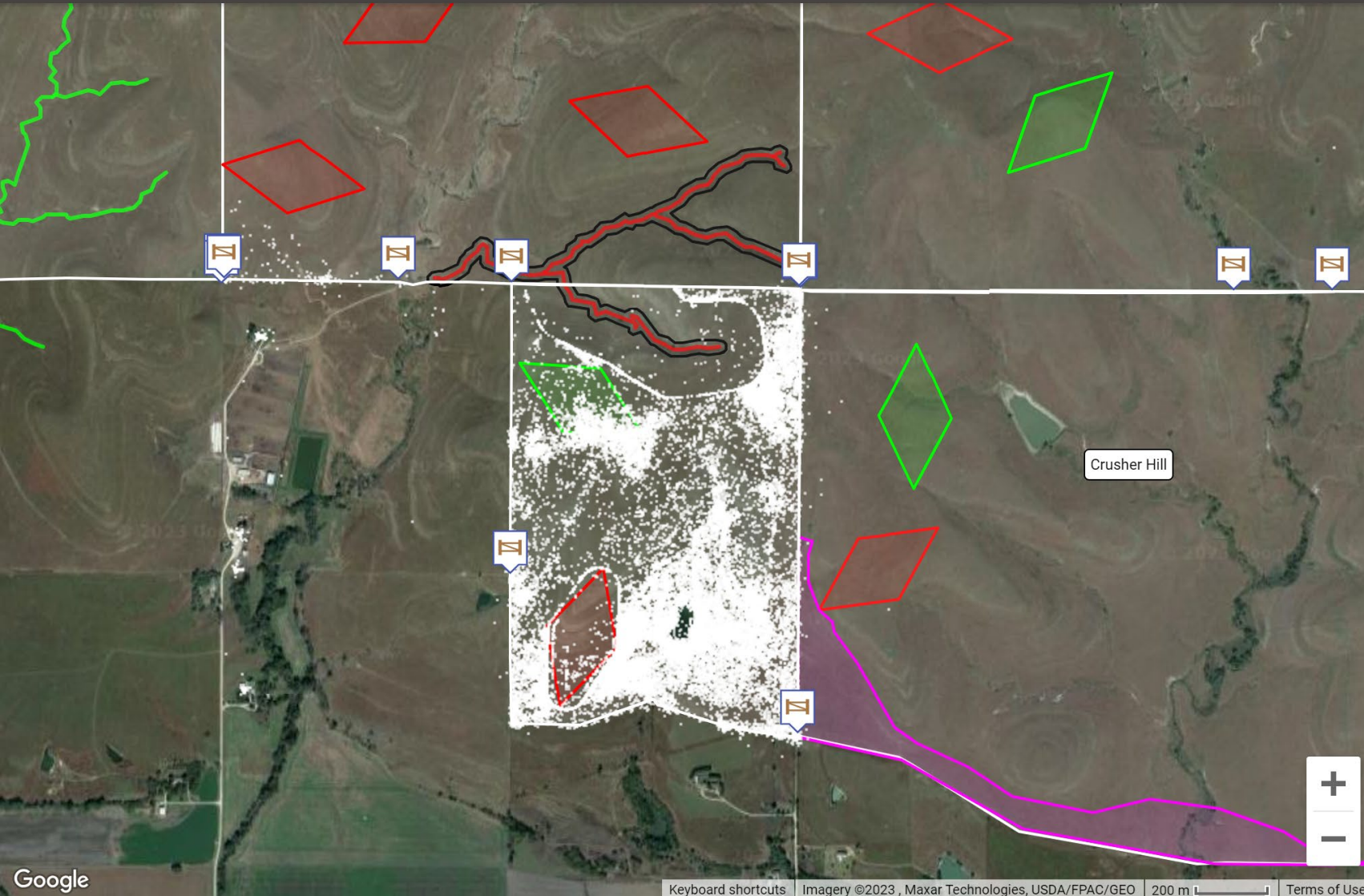


RH
5/1/23 – 6/20/23



J Hfr
6/13/23 – 7/5/23





Grazing Data ⓘ

SELECT GRAZING DATA

SELECT COLLARS TO DISPLAY

Vences ⓘ

CREATE VENCE

SELECT VENCES TO DISPLAY

Calendar ⓘ

SHOW CALENDAR

Landmarks ⓘ

CREATE LANDMARK

SELECT LANDMARKS TO DISPLAY

Map ⓘ

MAP OPTIONS

J Hfr
7/5/23 – 7/20/23



Ranch Management Field Day

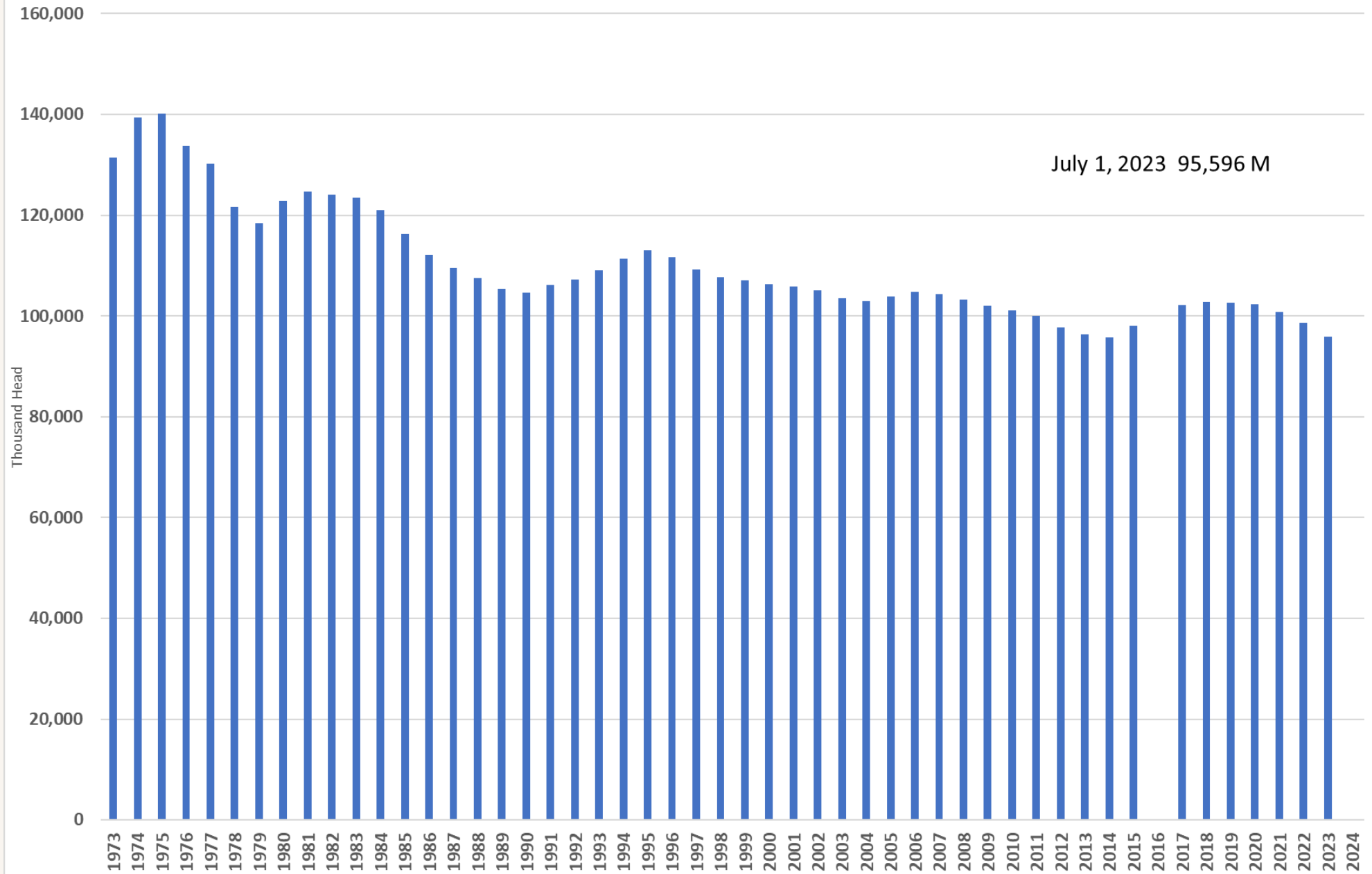
Everyone is Talking a Bull Market, Here's WHY!

Presented By

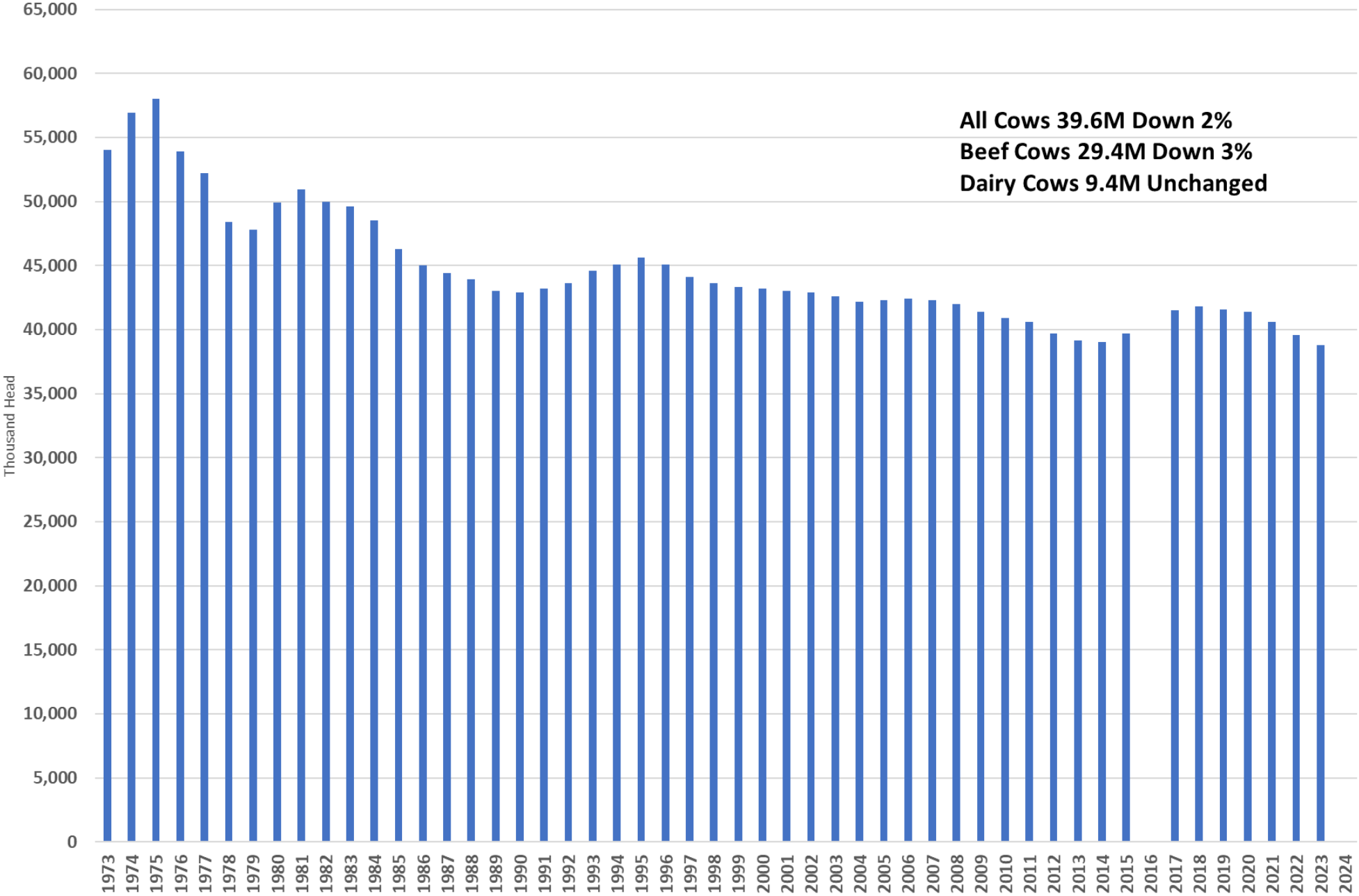
Don Close

August 17, 2023

July 1, All Cattle & Calves

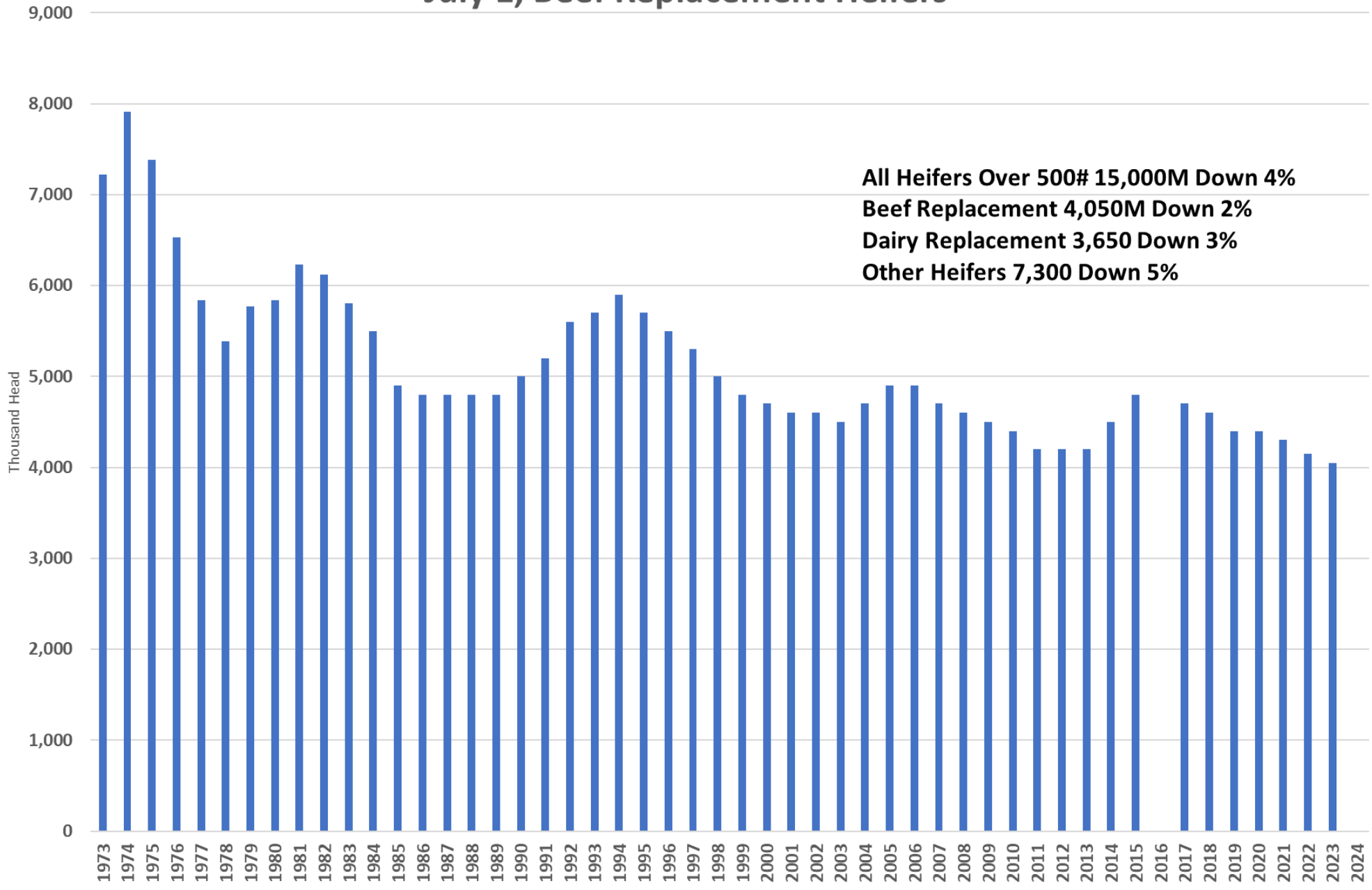


July Inventory, All Cows



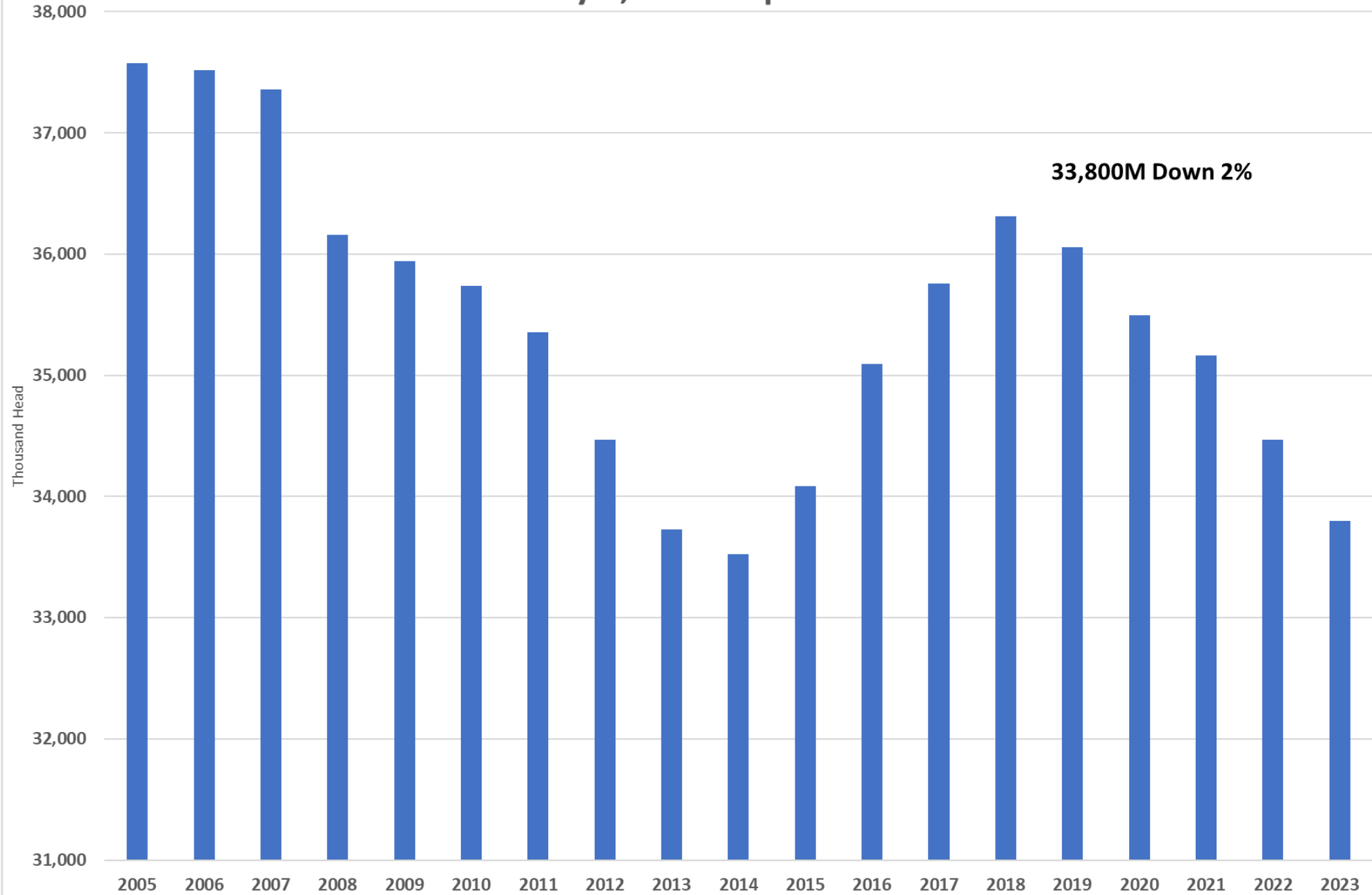
All Cows 39.6M Down 2%
Beef Cows 29.4M Down 3%
Dairy Cows 9.4M Unchanged

July 1, Beef Replacement Heifers



All Heifers Over 500# 15,000M Down 4%
Beef Replacement 4,050M Down 2%
Dairy Replacement 3,650 Down 3%
Other Heifers 7,300 Down 5%

July 1, Calf Crop Est.

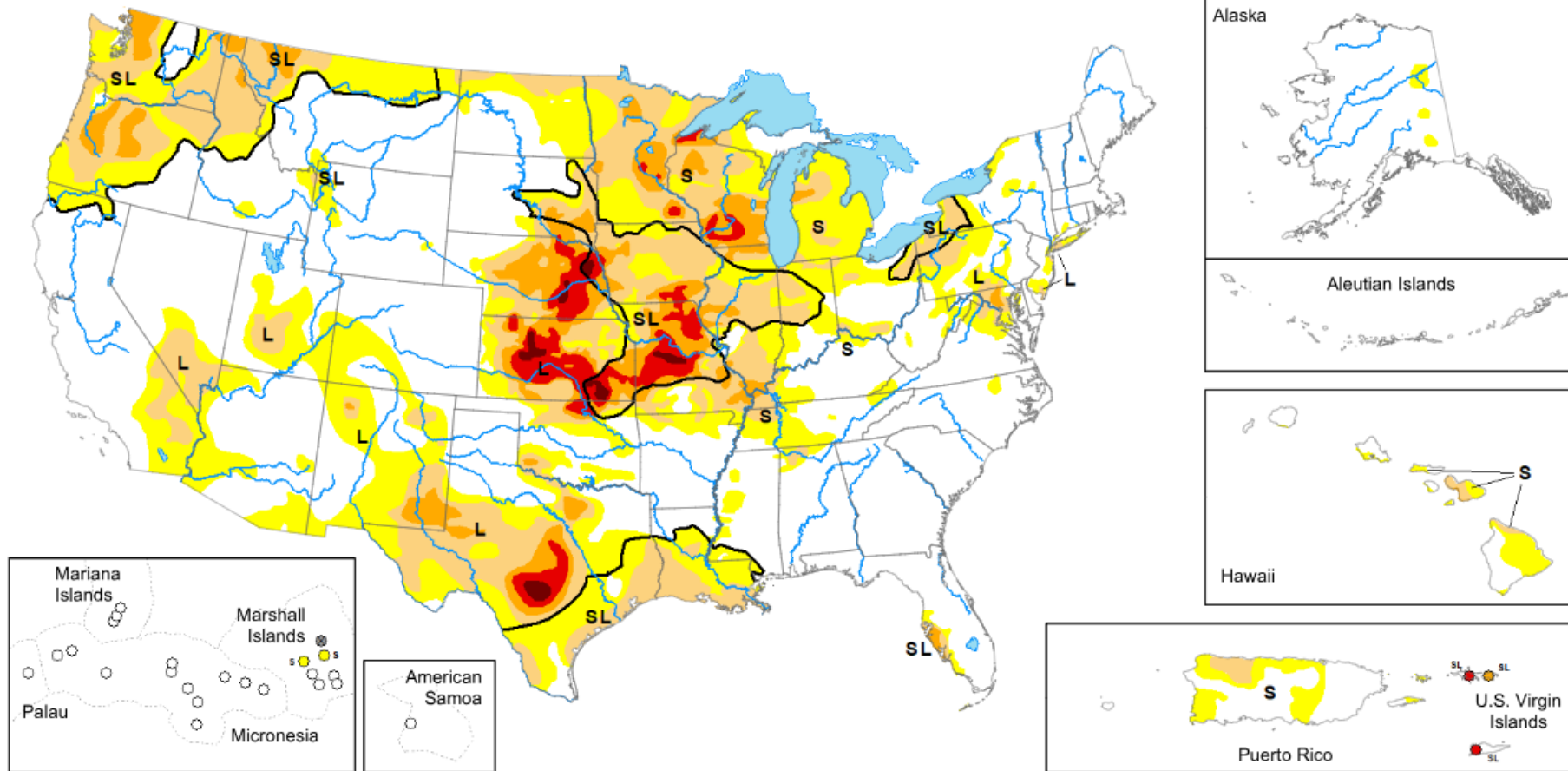


33,800M Down 2%

Map released: July 20, 2023

Data valid: July 18, 2023

View grayscale version of the map



United States and Puerto Rico Author(s):

[Richard Tinker](#), NOAA/NWS/NCEP/CPC

Pacific Islands and Virgin Islands Author(s):

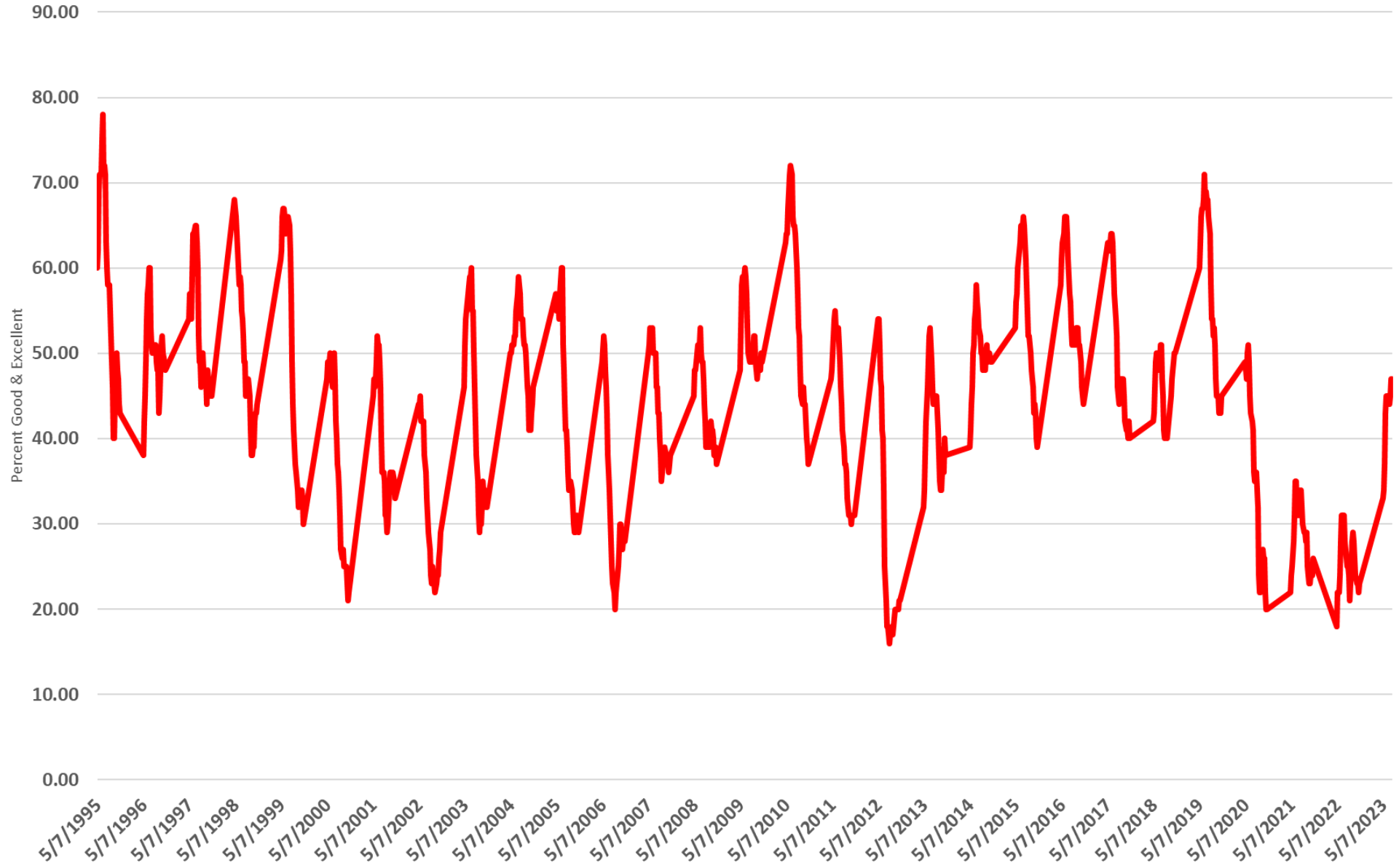
[Brad Rippey](#), U.S. Department of Agriculture

More maps and statistics:

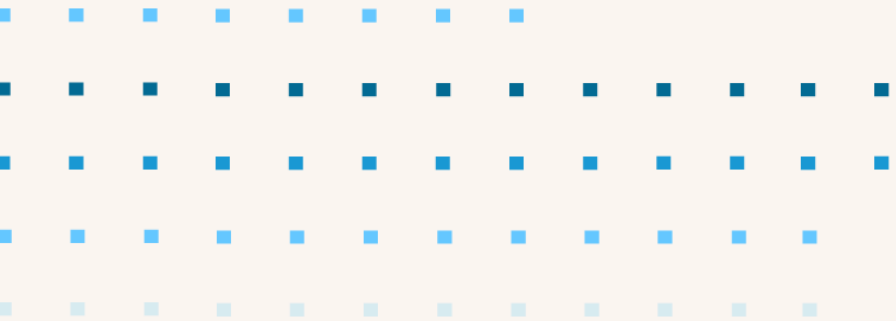
- U.S. States and Puerto Rico
- Continental U.S.
- Regions ▾

The data cutoff for Drought Monitor maps is each Tuesday at 8 a.m. EDT. The maps, which are based on analysis of the data, are released each Thursday at 8:30 a.m. Eastern Time.

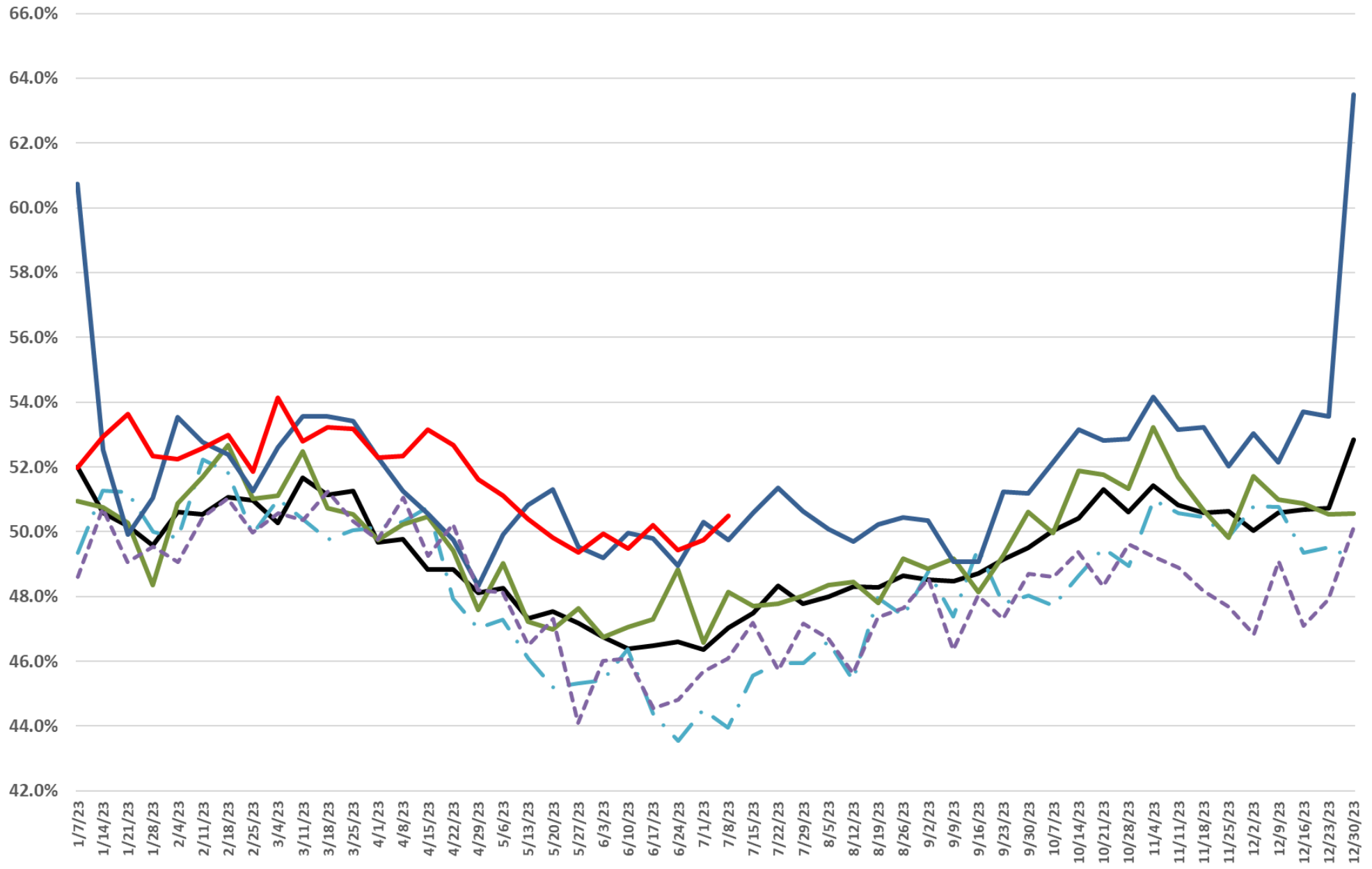
Pasture & Range Condition Score Percent Good & Excellent



Slaughter



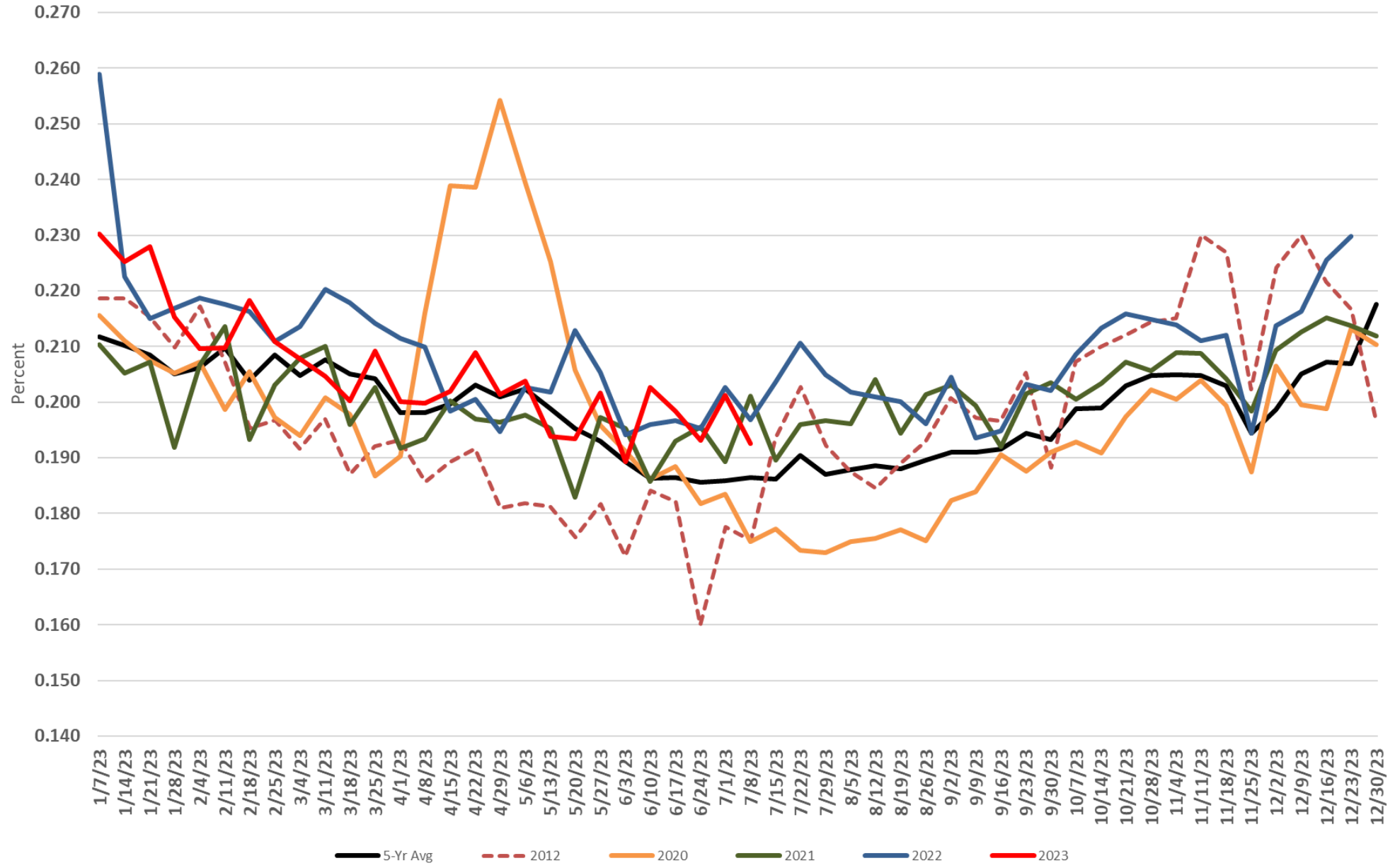
Fed Heifers and Cows as a % of FI



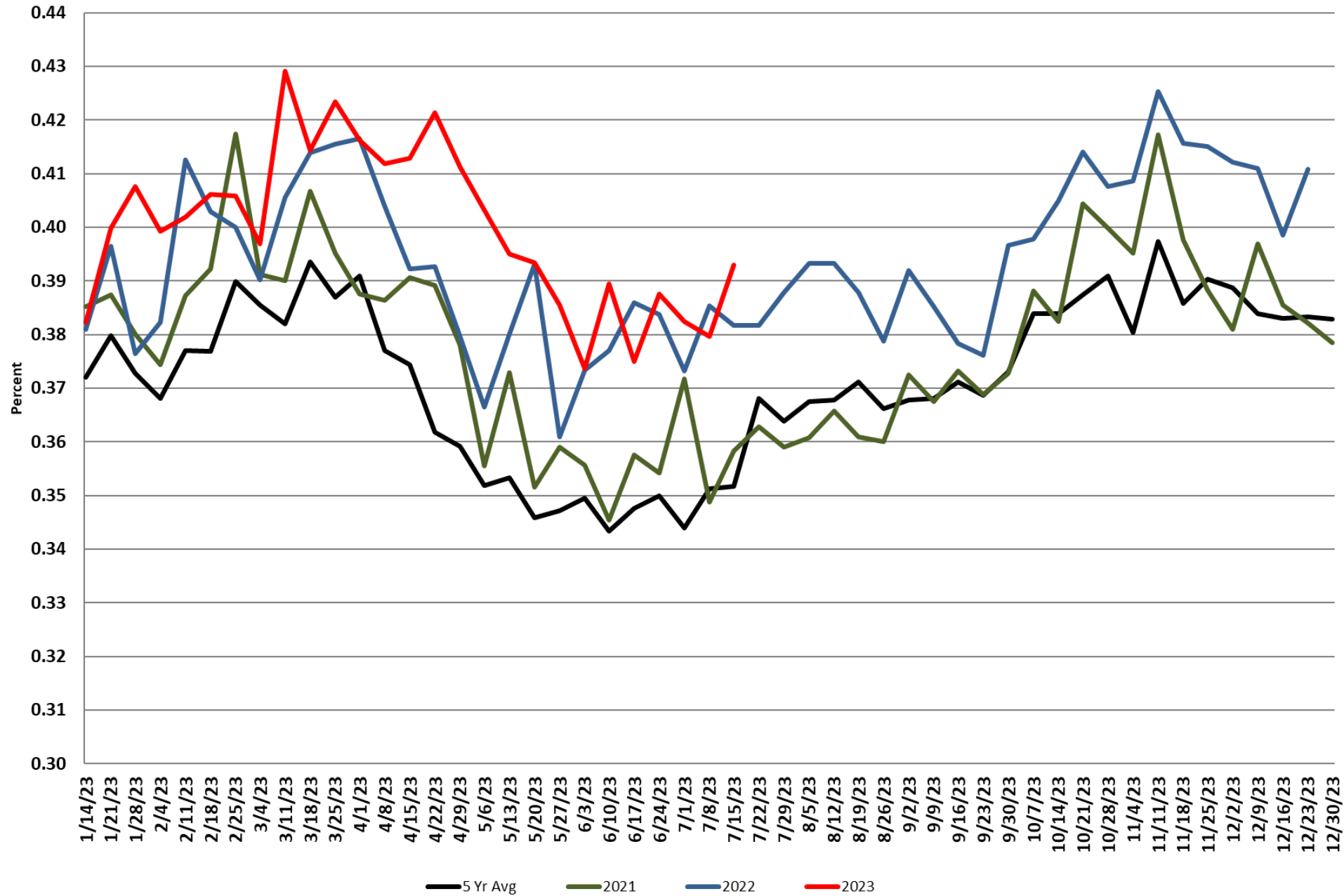
— 5 Yr Avg — 2012 — 2021 — 2022 — 2023 - - - 2013

USDA-AMS, Terrain

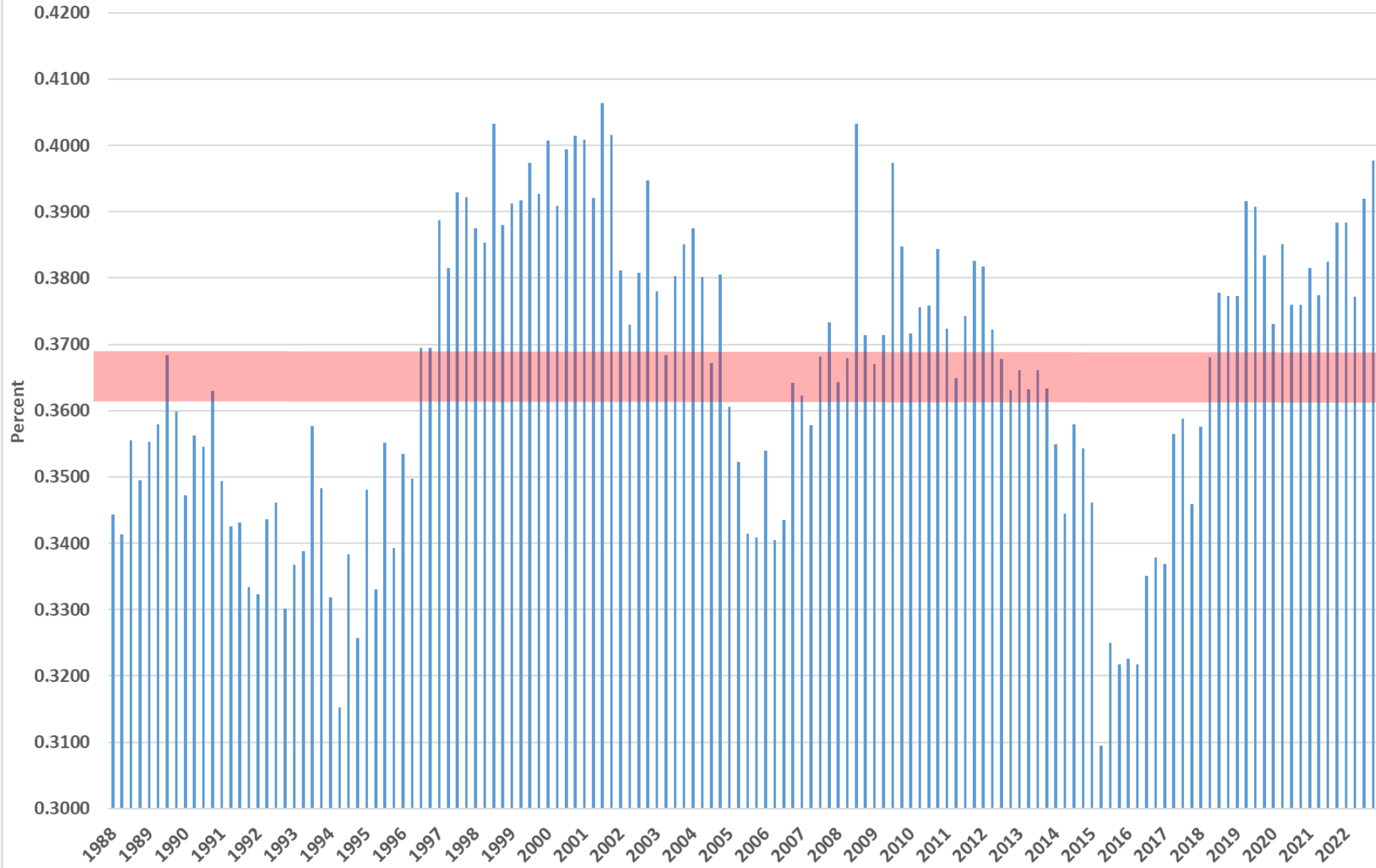
Cows As % of FI Slaughter



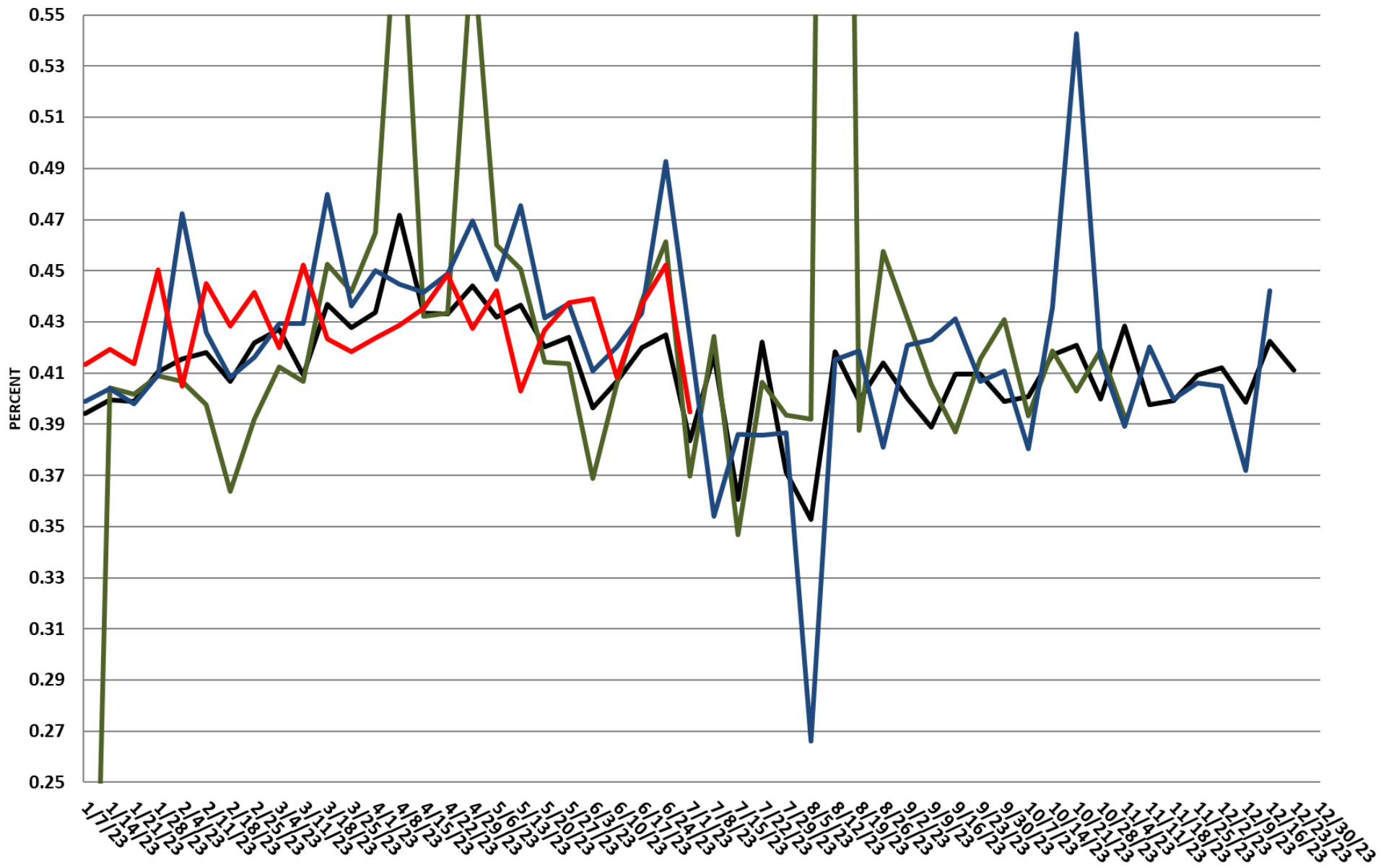
Heifers as a Percent of Fed Sltr



Heifers As A Percent of COF



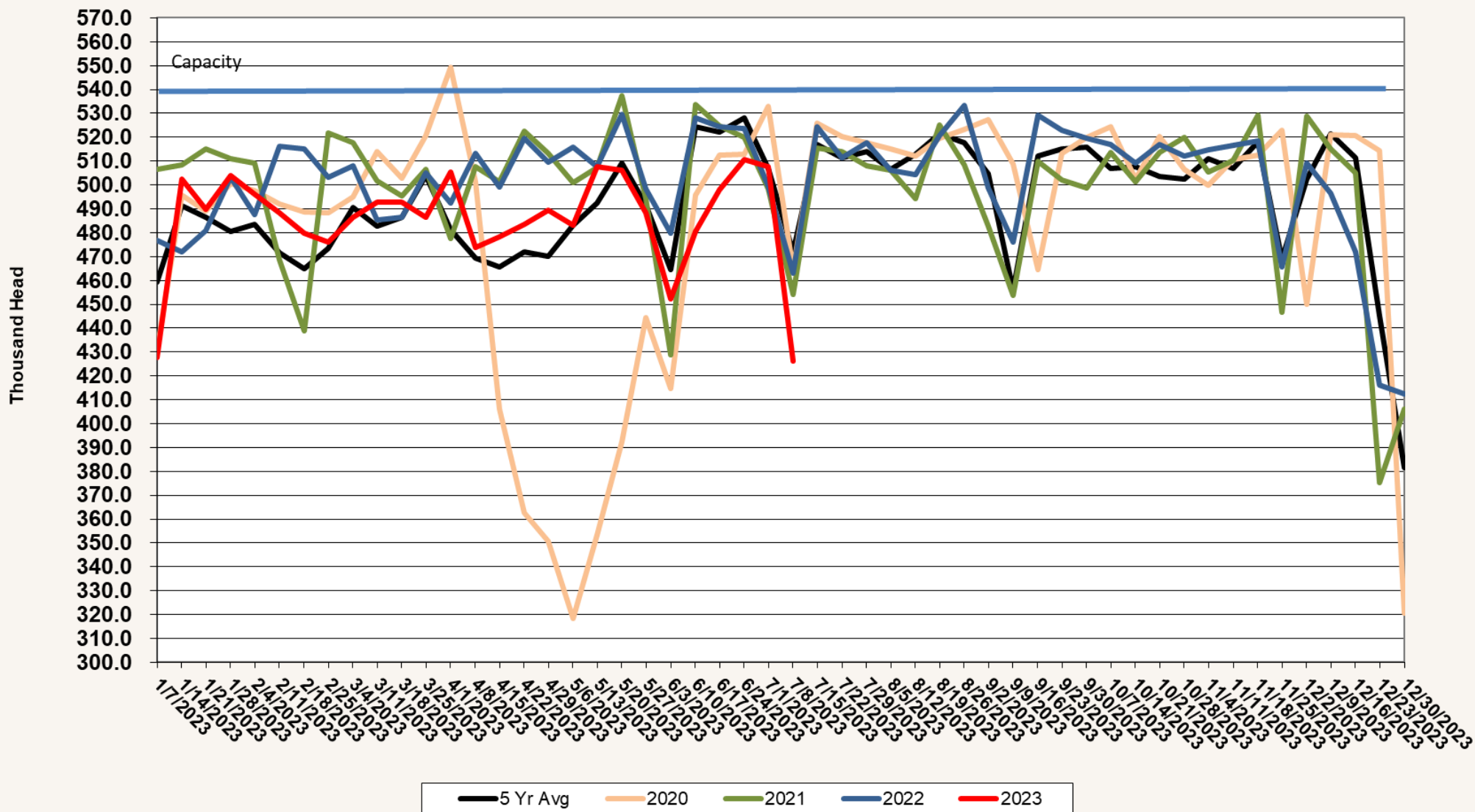
Weekly Percent of Heifers in National Feeder Summary



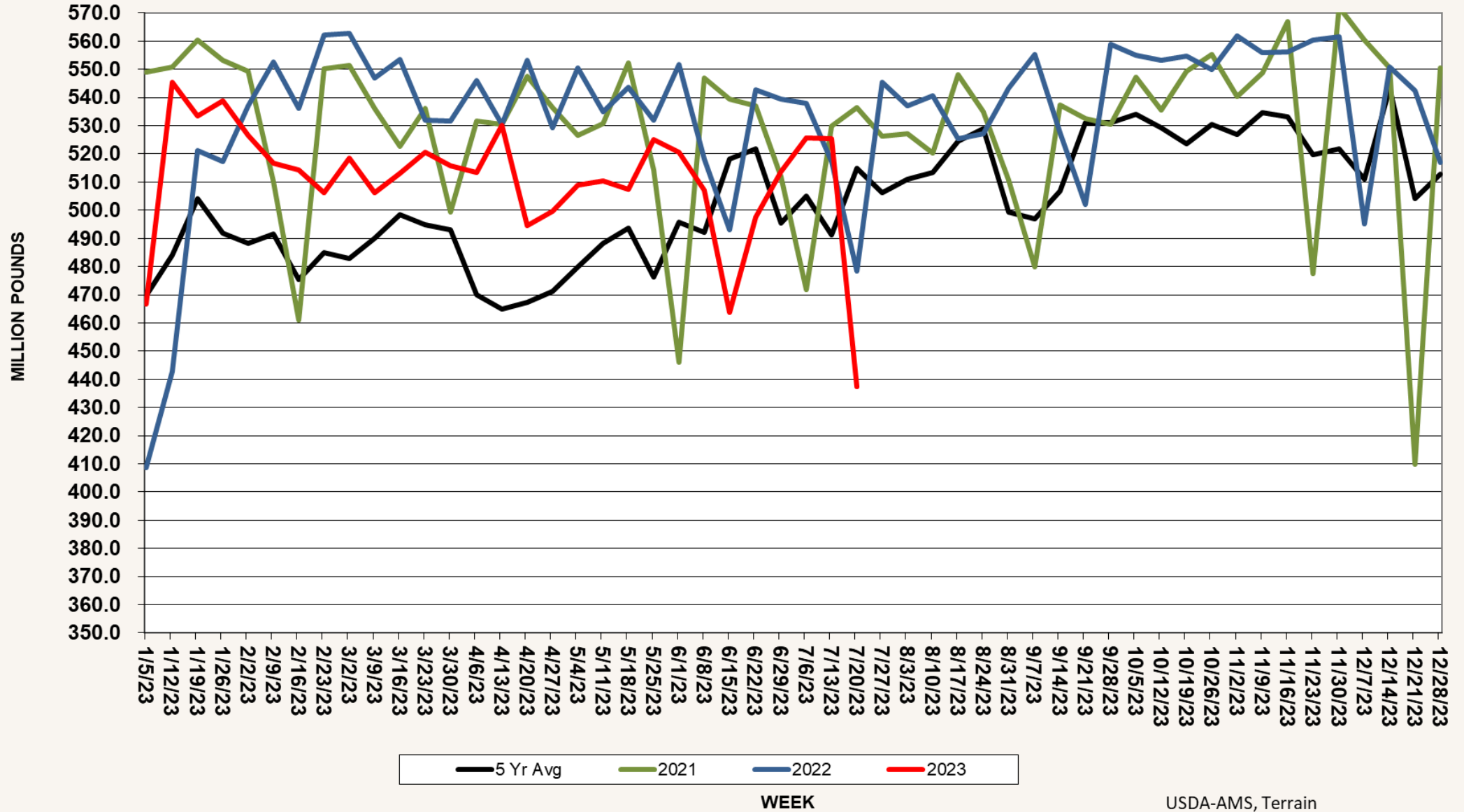
— 5 Yr Avg — 2021 — 2022 — 2023

Source: USDA-AMS, Terrain

Fed Slaughter



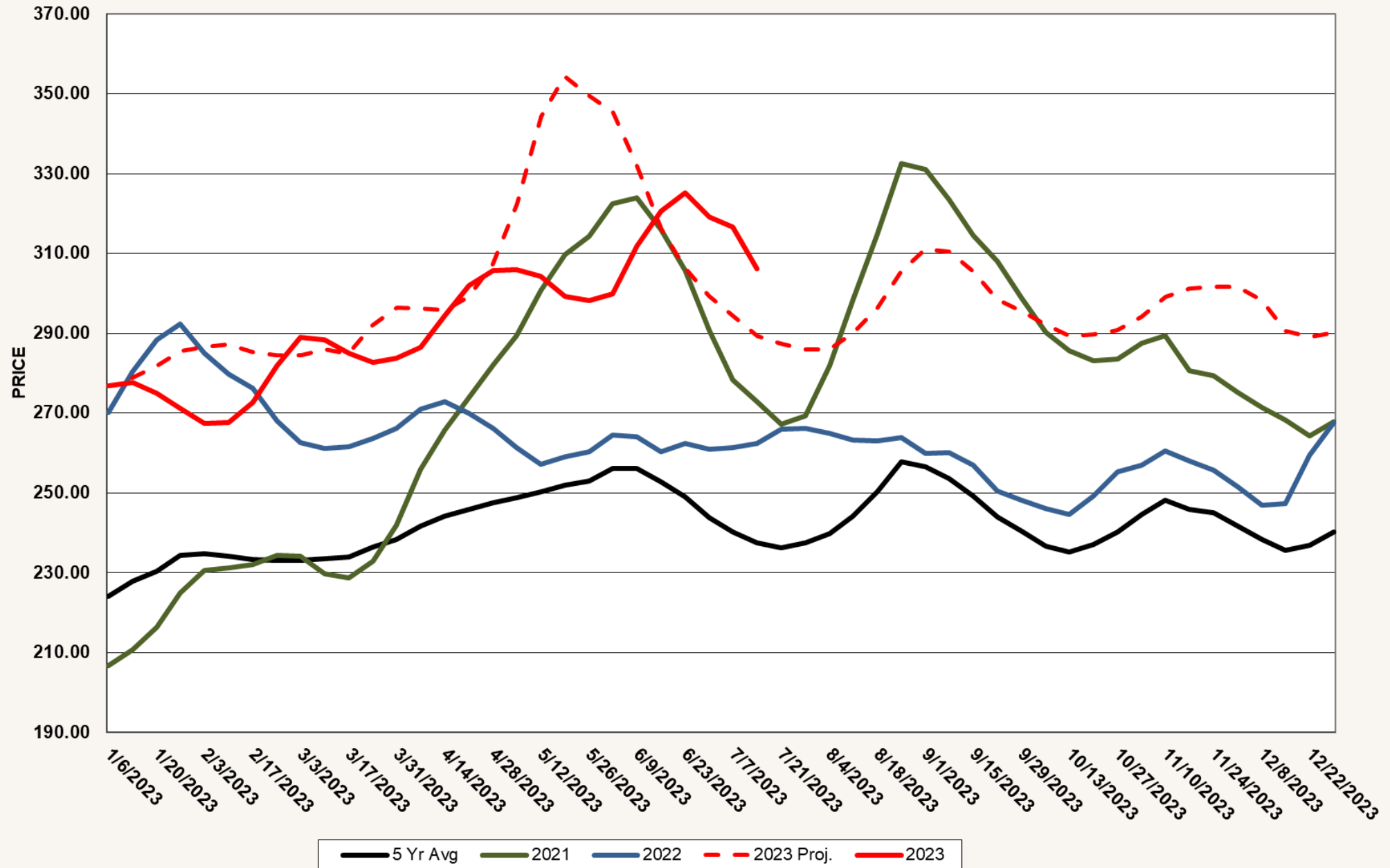
WEEKLY BEEF PRODUCTION



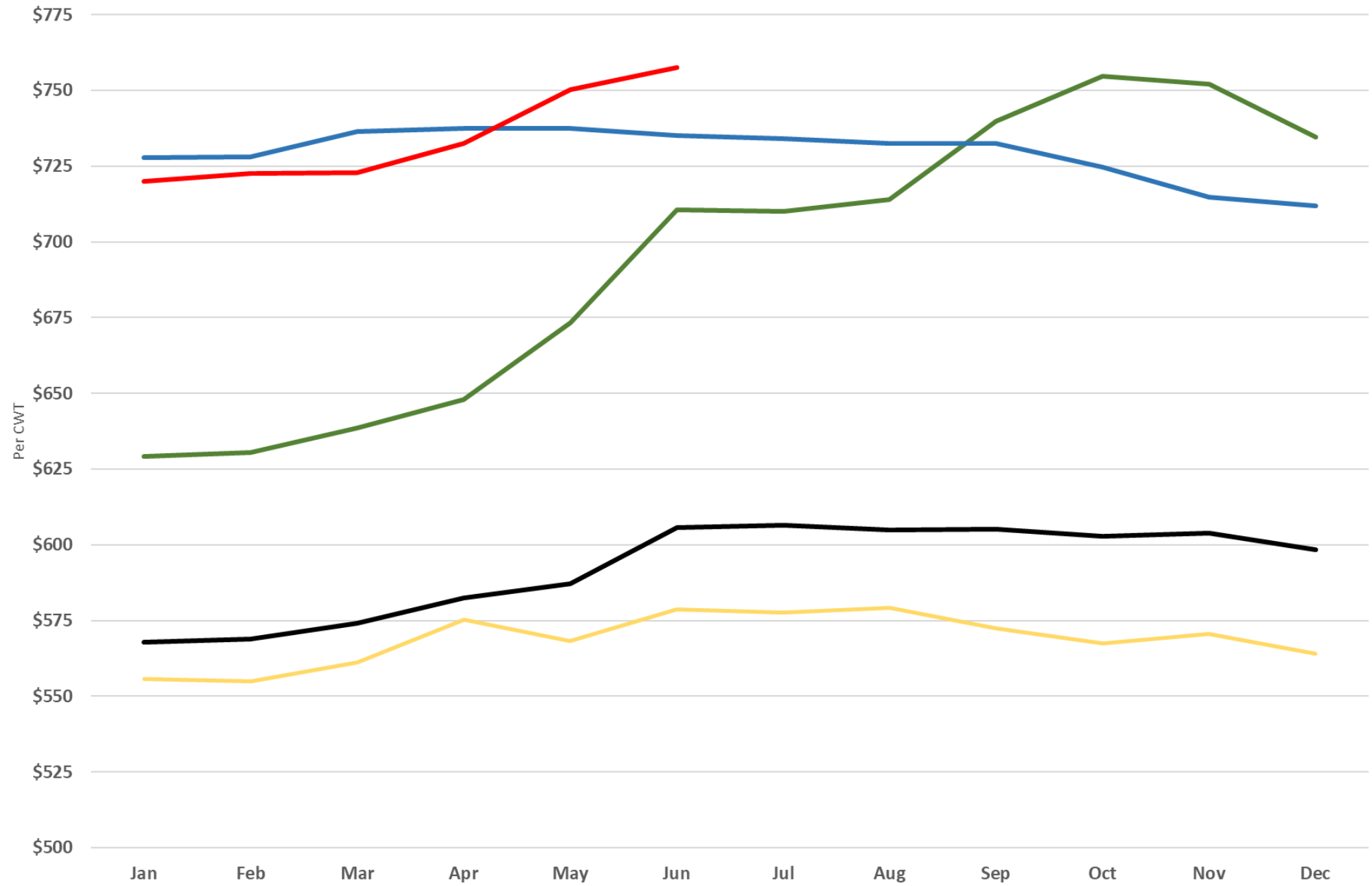
Consumer Demand



Comprehensive Cutout



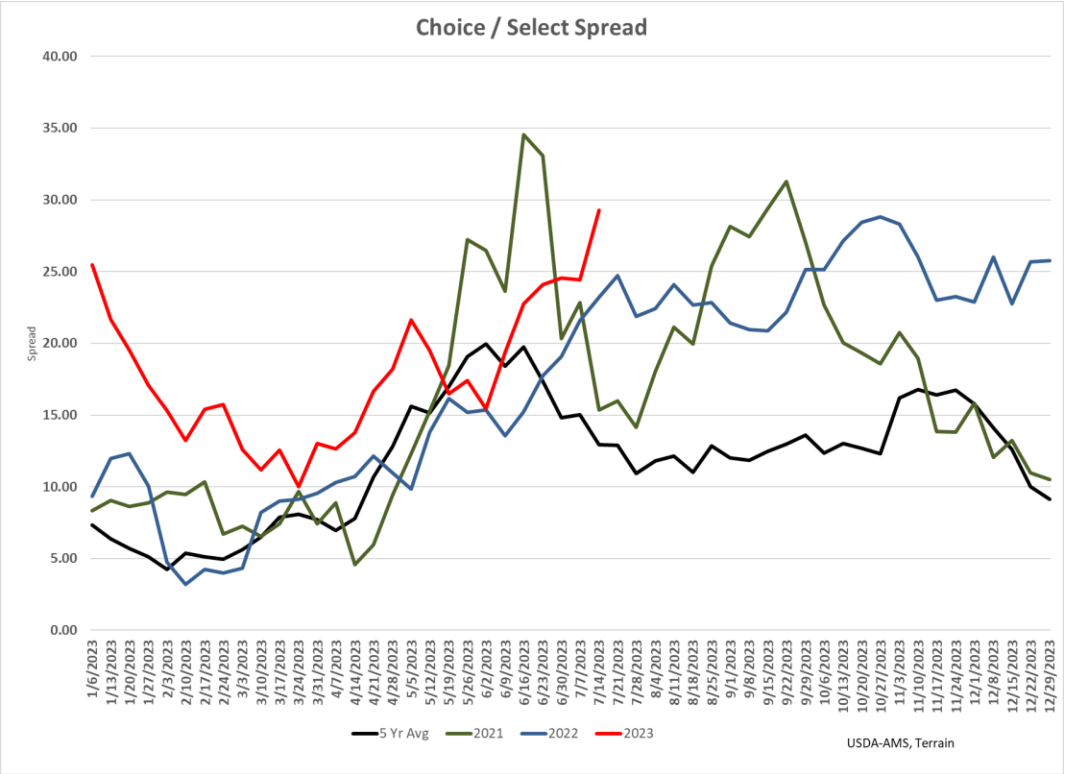
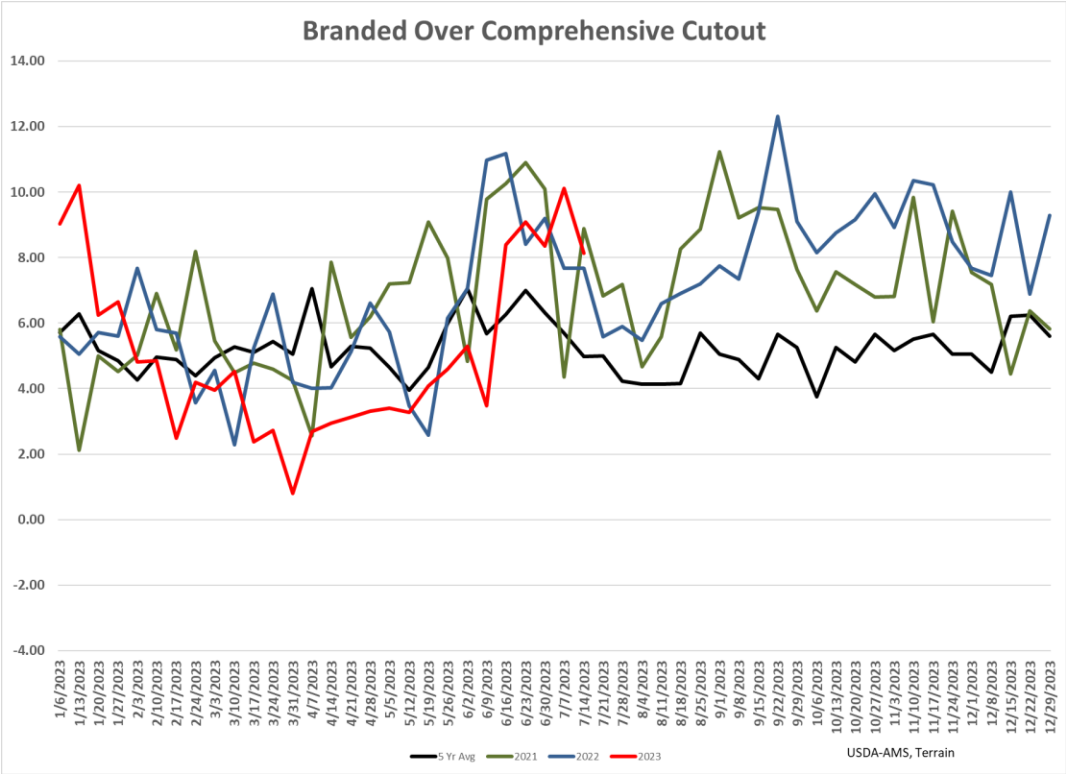
All Retail Beef



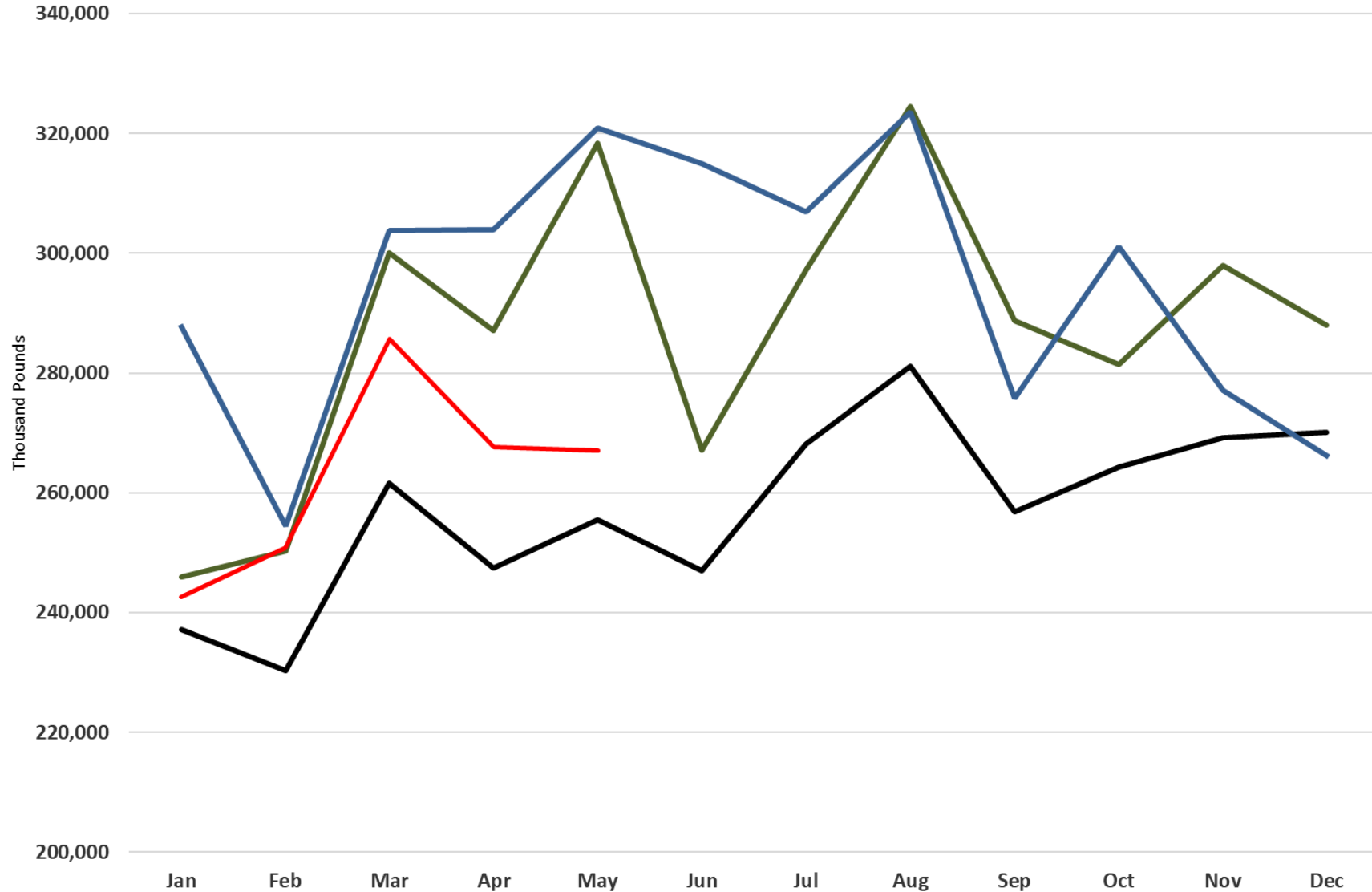
— 5 Yr Avg — 2020 — 2021 — 2022 — 2023

USDA-FAS. Terrain

Demand Has Eased But Still Good



US Beef Exports



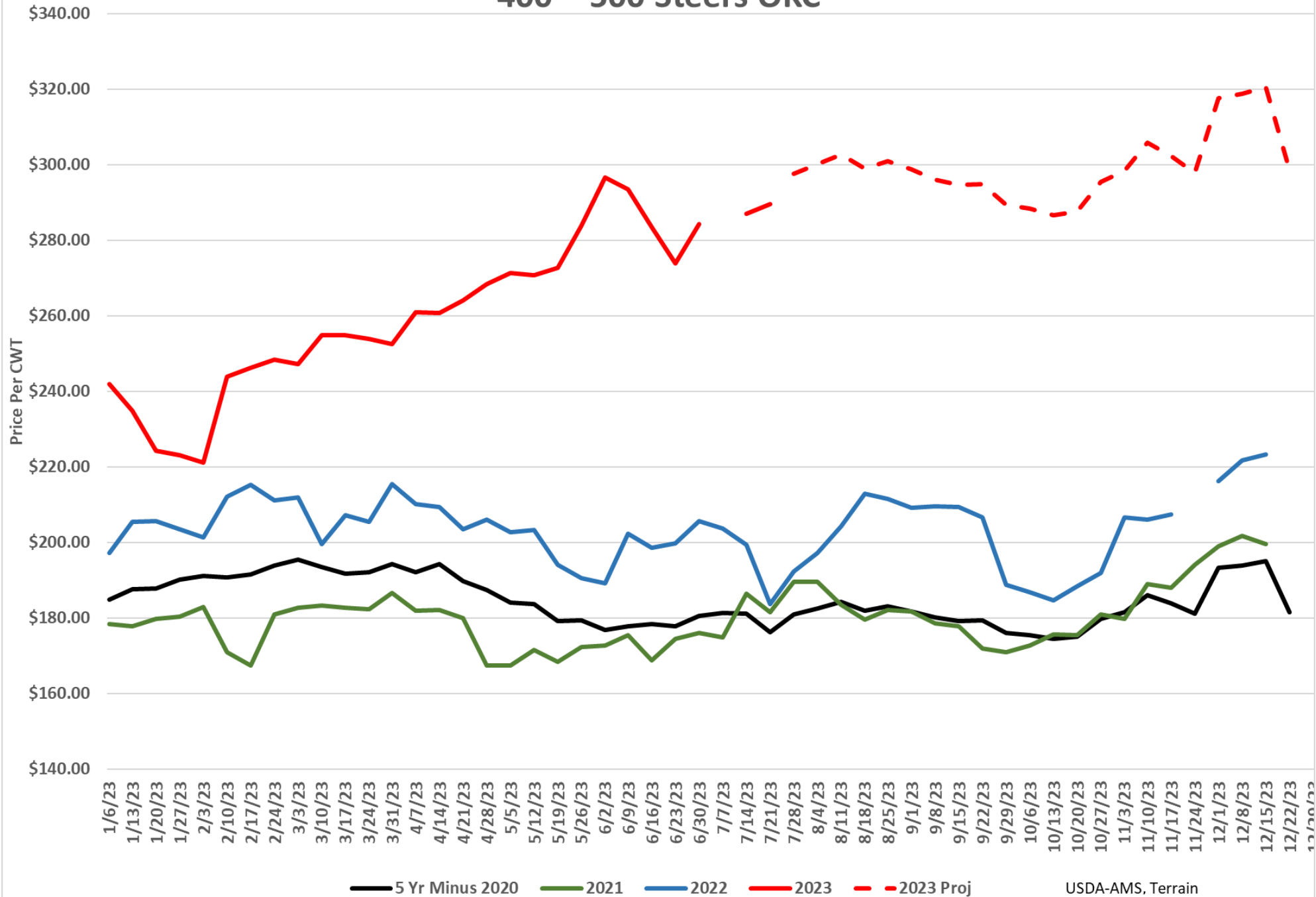
— 5 Yr Avg — 2021 — 2022 — 2023

USDA-NASS, Terrain

Price Outlook

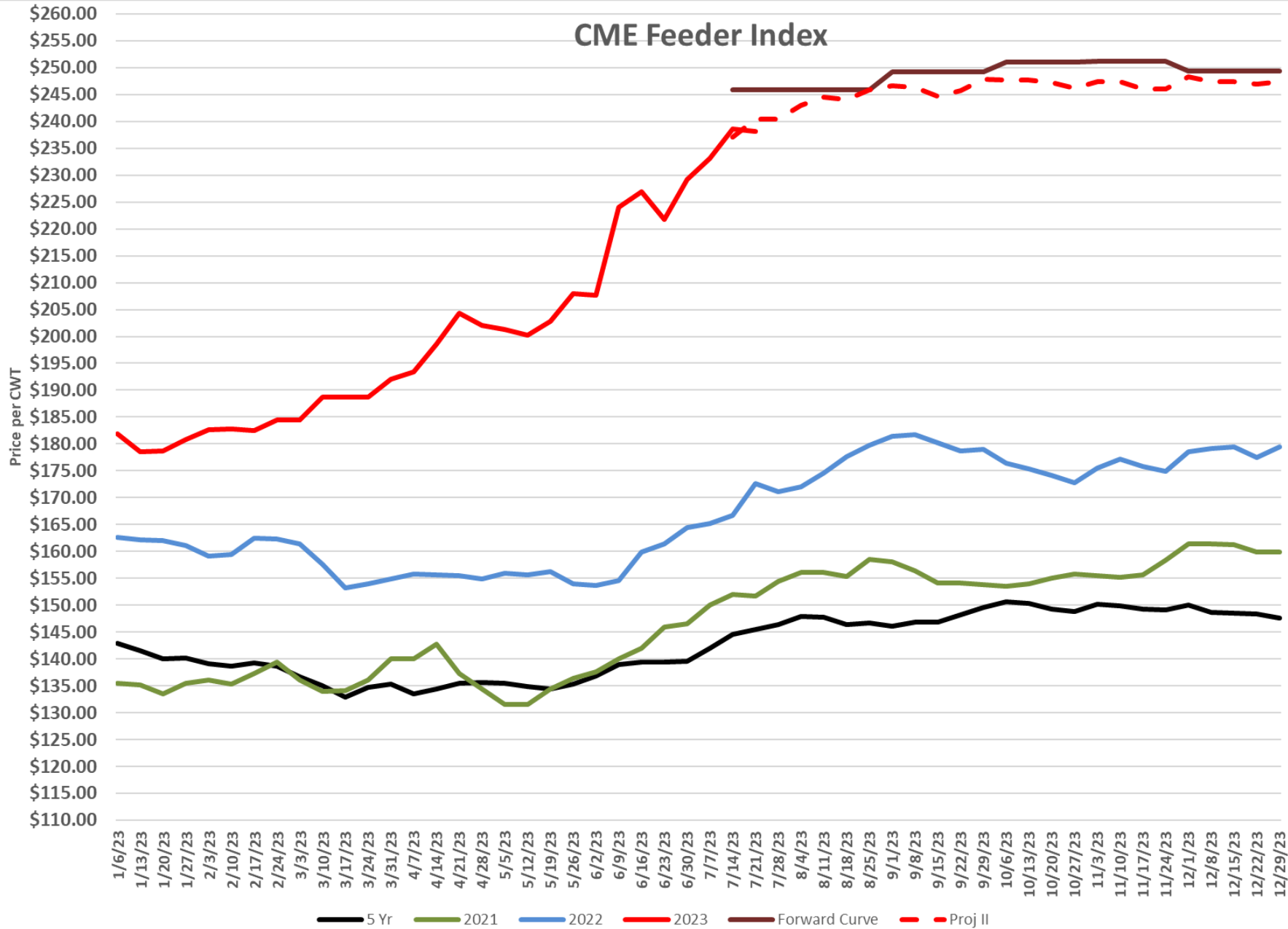


400 - 500 Steers OKC

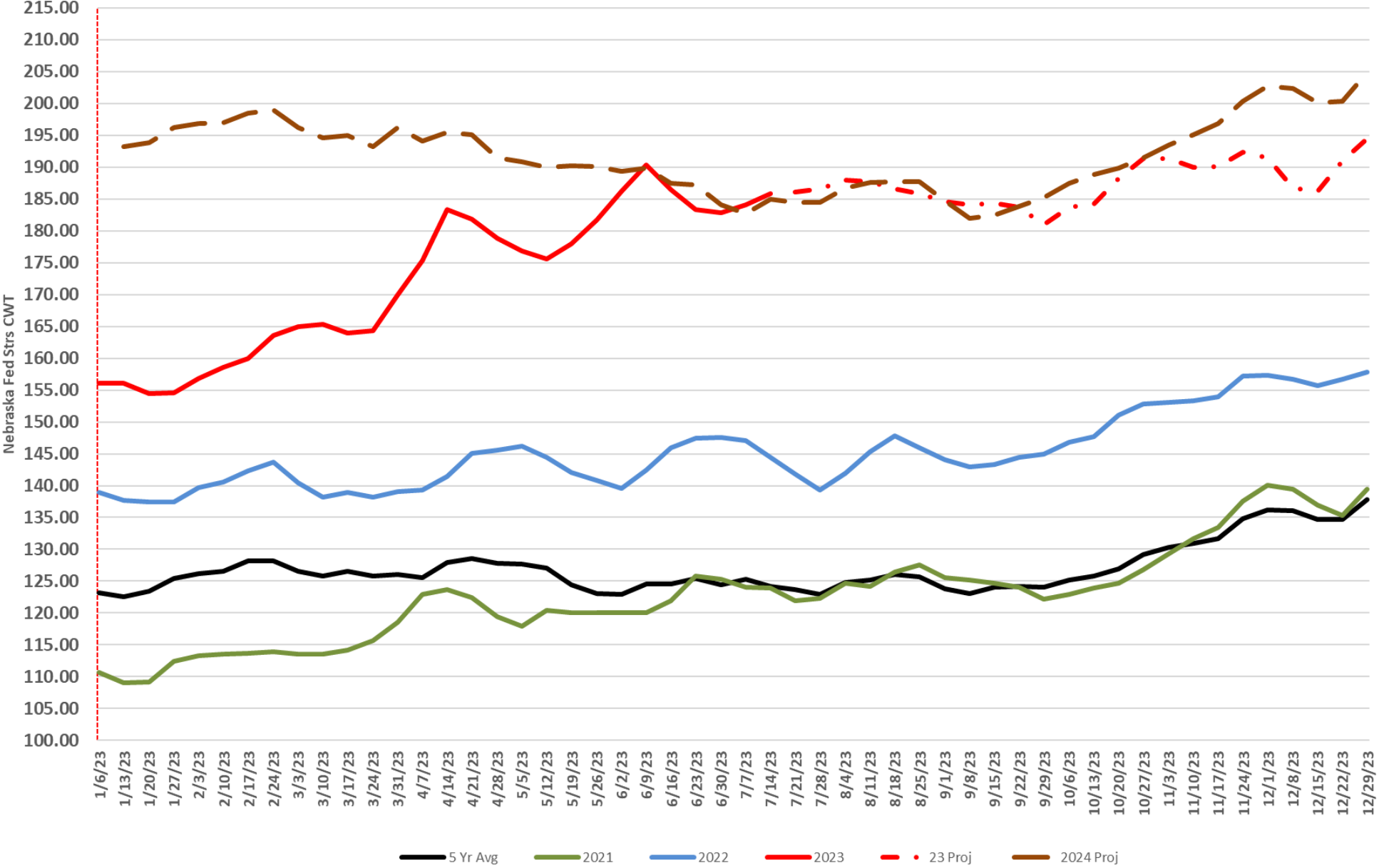


USDA-AMS, Terrain

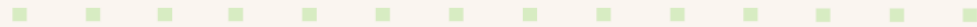
CME Feeder Index



Nebraska Fed Steers 2023



Thank You



 **Terrain** offered by participating Farm Credit associations.



FARM CREDIT ASSOCIATIONS OF KANSAS

Farm Credit of Western Kansas

800.657.6048

fcwk.com

Frontier Farm Credit

800.397.3191

frontierfarmcredit.com

American AgCredit

800.800.4865

agloan.com

High Plains Farm Credit

800.864.4458

highplainsfarmcredit.com



Hu·ve·pharma: a global animal health company *focused* on production animals, that is dedicated to developing, manufacturing, and marketing a wide portfolio of livestock health and nutrition products.

We are Shaping Livestock Solutions.



www.huvepharma.us | 1-877-994-4883

Scan the code to learn more about Mushrush
Ranches!





National Cattlemen's Beef Association

WORKING FOR THE AGRICULTURE INDUSTRY SINCE 1894

Advancing the business interests of its members is KLA's mission. Officers and staff work to achieve this goal day-in and day-out by working with legislators and regulatory agencies to advance KLA policy. While a large percentage of KLA's membership is composed of beef producers, the association's efforts benefit producers of a variety of ag commodities as well as those engaged in related industries. KLA invites anyone with a financial stake in Kansas agriculture to join us in our work on their behalf.

We've got your back.

- Protecting private property rights of agricultural producers.
- Ensuring that county and municipal zoning and building regulations do not restrict agriculture.
- Supporting increased weight limits for trucks carrying agricultural inputs, supplies and commodities.
- Defending agricultural exemptions from sales and property taxation.
- Working with state government and groundwater management districts to ensure availability of water for agriculture and other uses well into the future.



KLA/NCBA MEMBERSHIP APPLICATION

Name: _____

Spouse: _____

Farm/Ranch Name: _____

Address: _____

City: _____ State: _____

County: _____ Zip: _____

E-mail: _____

Home Phone: _____

Cell Phone: _____

Recruited By: _____

Type of Operation: _____

Kansas Livestock Association Dues.....\$120.00
 National Cattlemen's Beef Association Dues.....\$150.00

Total Dues Investment \$ _____

The portion of KLA and NCBA dues not directly allocable to lobbying expenditures is tax deductible for most members as an ordinary and necessary business expense. For KLA, dues are 92% deductible; NCBA dues are 90% deductible.

Join both associations and receive discounts on:
Dell Technologies | Cabela's | Bass Pro Shops
Caterpillar | New Holland | Roper & Tin Haul | John Deere

Return this application with your dues investment to:
 Kansas Livestock Association
 6031 SW 37th Street • Topeka, Kansas 66614
 Or join online at www.kla.org